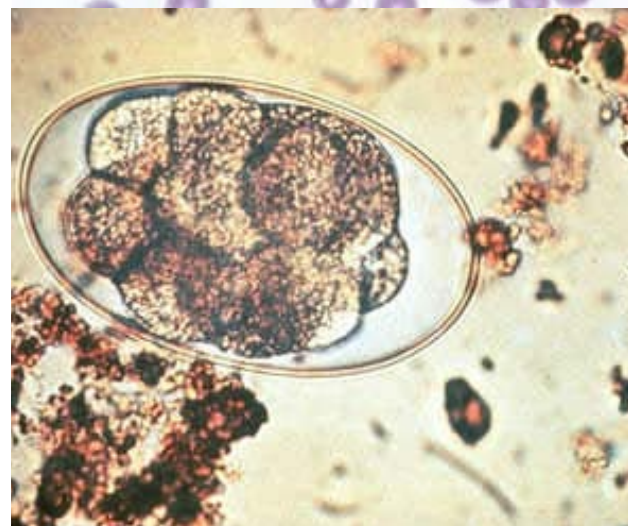
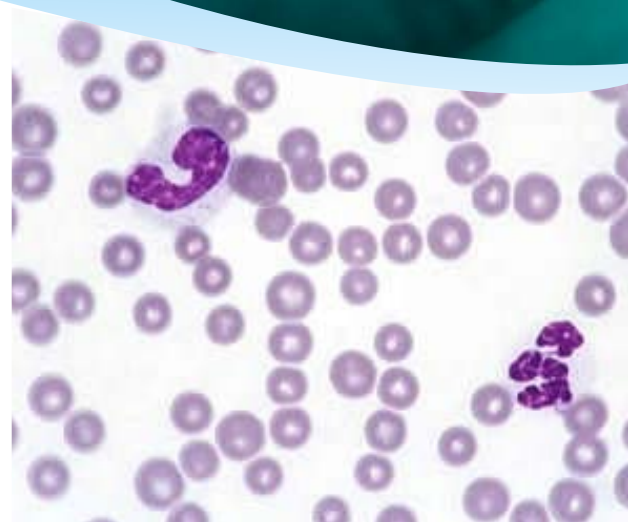


LABORATORY SERVICES



Our in house laboratory is staffed by our two Laboratory Technicians during normal working hours, and then by our 24/7 Nurse cover out of hours.

Tests include:

Blood analysis

– haematology, biochemistry

Equine blood smear, showing Red Blood Cells and mature/immature Neutrophils (White Blood Cells)

Faecal analysis

– worm egg counts

Large Strongyle (*Strongylus vulgaris*)

Joint, tendon sheath and peritoneal analysis

Urinalysis

IGG tests for Newborn Foals

Microscopy

– skin scrapes, bacteriology

We endeavour to provide a 24 hour turnaround of results in all cases, this enables us to give our clients a rapid and effective service.

Delivering first-class veterinary care to the New Forest since 1923