

SEADOWN

VETERINARY GROUP

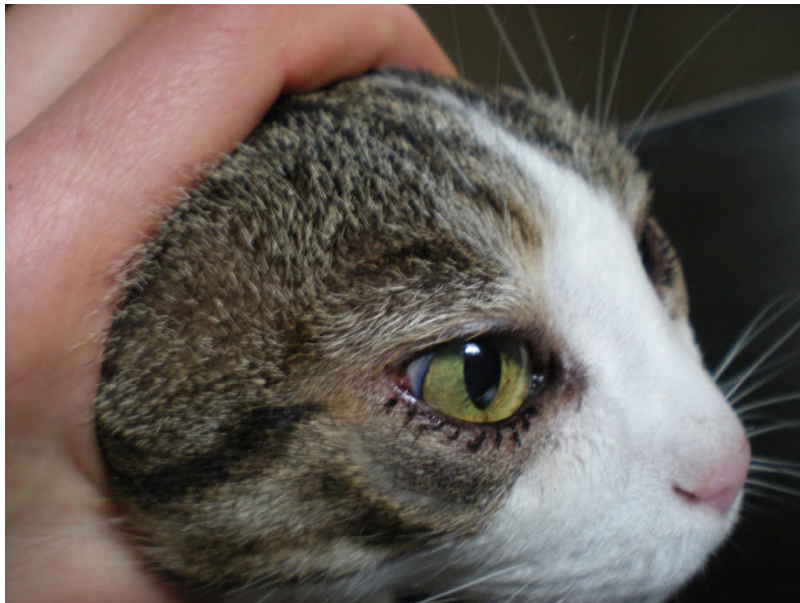
Tel. Hythe (023) 8084 2237



Entropion

Entropion is the in-turning of some or all of the upper or lower eyelid. This causes significant discomfort because the haired skin and eyelashes contact the surface of the eye, which can result in a corneal ulcer. Vision may also be impaired, because the animal cannot open the eye normally. Entropion may be seen in any species, but is most common in dogs and cats. Entropion may be breed related, particularly in dogs with excessive skin around the face, for example Shar Peis. It can also occur in conjunction with other painful eye conditions, such as conjunctivitis or corneal ulceration because the discomfort causes eyelid spasm.

Treatment of entropion is dependent on the underlying cause, however surgical correction is often required to re-position the eyelid and ease discomfort. In young animals who are still growing, it may not be appropriate to carry out permanent eyelid correction and 'tacks' (temporary sutures) are sometimes used. In adult animals, surgical correction usually involves removal of tissue to correct the eyelid anatomy. Our operating microscope allows improved visualisation of the eye and means we can operate with very fine instruments and suture material.



Ectropion

Ectropion is the out-turning of some or all of the upper or lower eyelid. This problem occurs less frequently and is not generally painful. However it can pre-dispose to conjunctivitis and appear unsightly. In some cases surgical correction may be appropriate.

**Seadown Veterinary Hospital, Frost Lane, Hythe
Southampton SO45 3NG**

Fax Line 023 80842026 Email enquiries@seadownvets.co.uk Website www.seadownvets.co.uk

R.A.Bentley, B.V.Sc.,M.R.C.V.S. P.J.Tunney, B.V.M.S., M.R.C.V.S. K.T.McMorris, B.VET.MED., Cert. V. Ophthal, M.R.C.V.S.
G.S.Moffat, B.V.Sc.,Cert GP (Eq),M.R.C.V.S. A.F. Jennings B.V.S, Cert V.Ophthal. M.R.C.V.S. and associates.